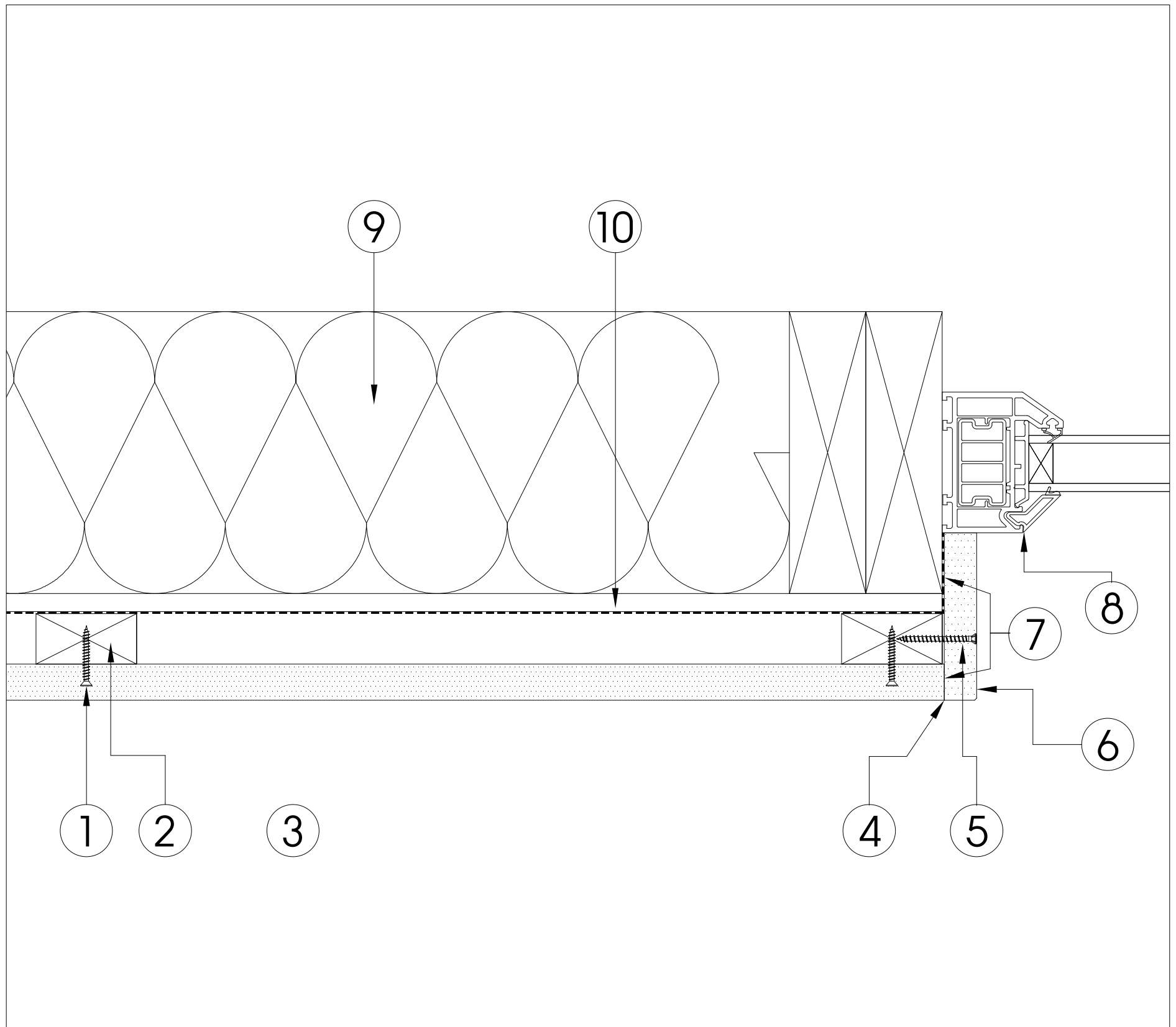


## Window/Door jamb junction with flush Reveal boards - butt jointed

#021.22.01



1 - 30mm Cladding board  
fixing through tongue

2 - Battens at 600mm  
centres

3 - Envello Shadow Line+  
cladding board

4 - Back edge/corner of  
Reveal Board will need  
to be finished with  
touch-up coating if visible

5 - 40mm Envello Coloured  
Head screws

6 - Reveal Board, cut down  
to suit

7 - Back of Reveal Board to  
have clear polymer  
adhesive/sealant applied  
before fixing

8 - Example window/door  
jamb detail

9 - Example structural  
timber & sheathing or  
masonry wall

10 - Breather membrane